

The Global Meltdown Domino Effect

Our Planet Earth is about to be hit by a Methane Driven Runaway Greenhouse Effect which will destroy America and a third of the population globally as foretold in the book of Revelation.

Jesus has revealed to us what's coming, when, why and what you should do. **This is His End Time Revelation and Message.**



“By these waters also the world of that time was deluged and destroyed.”

“By the same word the present heavens and earth are reserved for fire, being kept for the day of judgment and destruction of the ungodly.”

2 Peter 3: 6-7



Preface

The original author of this document was John also called "John the Elder" on the island of Patmos nearly 2,000 years ago. Jesus Christ showed John in a number of visions "The End of The World" which in faith he wrote down.

In 2005, I received a calling from Jesus Christ and with it came visions and revelation which explained what John had seen on the island of Patmos 2,000 years earlier. These came over a period of several years and were first published on www.redskynews.com in April 2008 but went through a number of revisions until around 2011 – 2012 it was complete.

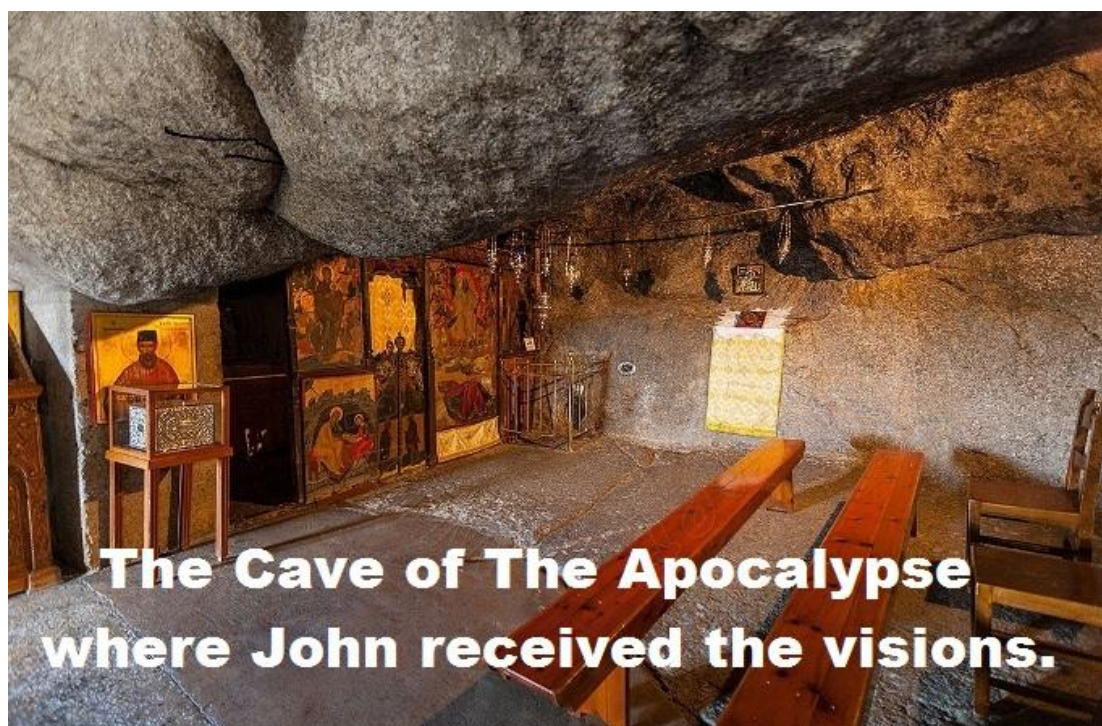
Jesus has given me 12 years notice of the beginning of these events.

In the book of Luke, Jesus talks about plagues and great pestilences, Coronavirus and current locust plagues in Asia are some of these. He then refers to great signs from heaven which I have revealed in this document and also talks about the opportunity to witness about Him on the street and in doing so fulfil the following scripture before His return.

"Although the Lord gives you the bread of adversity and the water of affliction, your teachers will be hidden no more; with your own eyes you will see them. Whether you turn to the right or to the left, your ears will hear a voice behind you, saying, "This is the way; walk in it." Isaiah 30: 20 (NIV)

This is Jesus' End Time Message: **"Global Catastrophe –This is The Way"**

Andrew Inns.

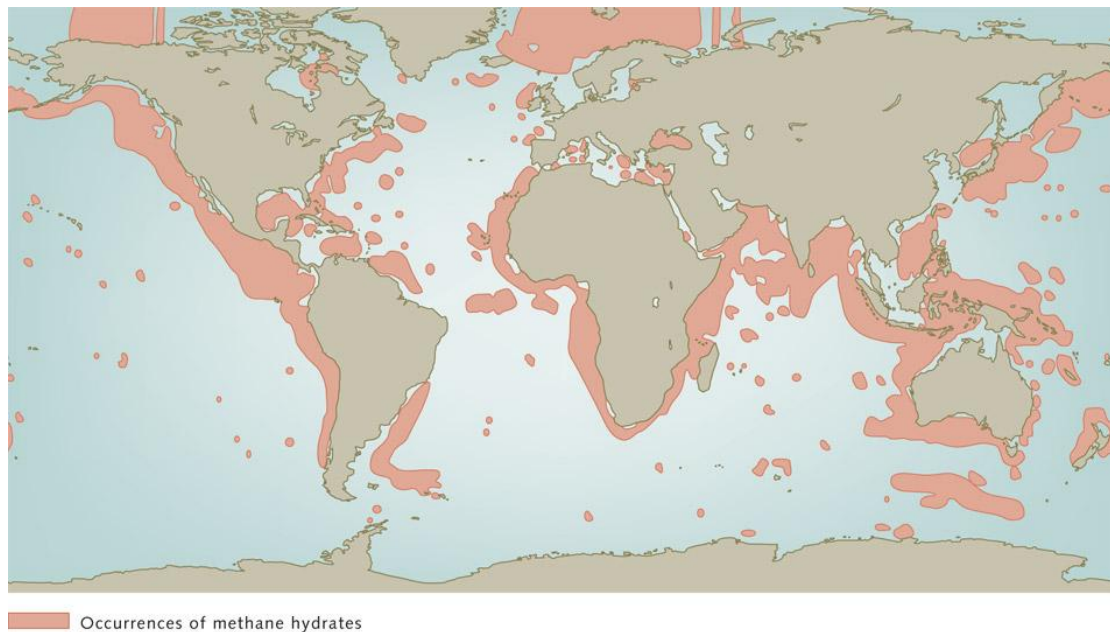


The Methane Bomb

Most people now accept that climate change is a serious problem however, this isn't the real problem but it has triggered the real problem.

In the ocean floor and the permafrost are frozen billions of tons of a greenhouse gas called Methane Hydrates which is about 21 times more effective at trapping heat than Carbon Dioxide. Methane Hydrate deposits equate to nearly 3 times more than all the planets coal and gas reserves.

Below is a world map of Methane Hydrate deposits represented by the pink areas.



In 2006 I wrote that the Arctic regions would defrost first, releasing billions of tons of Methane into the atmosphere and this would trigger the release of further Methane deposits from the sea floor. In 2021, this is exactly what is happening and still is.

Temperatures are rising and weather patterns are changing dramatically.

How did the Methane Hydrate get there?

The most likely explanation is the Methane was laid down at the time of The Great Flood. Sea levels at this time were much lower than today. After the flood much of the coast was lost to higher sea levels and the vegetation simply rotted down and Methane was formed.

Freezing temperatures and water pressure formed a lattice work of ice which absorbed the Methane and locked it in until now...

So rather ironically, out of flood came the fuel for the fire.

Global Catastrophe

The Arctic regions defrost and billions of tons of Methane are released into the atmosphere. Temperatures rise which trigger billions of tons of more Methane being released from the sea floor. Again Temperatures rise.

Event 1 – A Third of The Planet is Struck by Burning Hail. Rev. Ch. 8

The Methane release brings more violent storms.

During thunder storms water droplets start to freeze in the head of the thundercloud to form hail. When Methane is present, water freezes at a slightly higher temperature than usual. The ice forms a lattice type structure, drawing the Methane in like a sponge and locking it in.

A flash of lightning inside the head of the thundercloud ignites the “hailstones” and they fall to earth. The first wave of burning hail falls “clean” but ignites vegetation much of which is in clay soils. This results in tiny red particles carried by the heat being pushed up into the atmosphere. These particles are then absorbed by water droplets and the process begins again, but this time the burning hailstones appear to contain blood.



Revelation Chapter 8 Verse 7 says:

The first angel sounded his trumpet, and there came hail and fire mixed with blood, and it was hurled down upon the earth. A third of the earth was burned up, a third of the trees were burned up, and all the green grass was burned up. (NIV)

Burning Hail was witnessed in India in 1991 when a cyclone disturbed Methane in a delta in the Bangladesh area. I received an eyewitness account of this in 2010. Blood rain was also witnessed in India in 2001. The Burning Hail in Revelation is a combination of these two phenomena.

This will cause devastation and the Carbon Dioxide that will be given off by the burning vegetation will strengthen acid rain and increase temperatures.

The particles of ash from these fires will filter all wavelengths of light except red light from the Moon making it appear blood red and also filter light from the Sun making it appear darkened.

Joel Chapter 2 Verse 30 - 31 fulfilled.

“I will show wonders in the heavens and on the Earth, blood and fire and billows of smoke. The sun will be turned to darkness and the moon to blood before the coming of the great and dreadful day of the Lord.” (NIV)

Event 2 – Mega Tsunami Hits the USA Rev. Ch. 8

In the Atlantic Ocean just off the coast of West Africa sits Cumbre Vieja an active volcano in the Canaries. When this volcano erupts in the very near future it is likely that the west face will landslide into the sea. This will equate to a piece of rock twice the size of the Isle of Man hitting the water at 200 miles per hour.

This will create a dome of water 2,700 feet high, which will then collapse, rebound and generate a mega tsunami.

Within minutes of the collapse waves over 300 feet high will hit the Western Sahara. A few hours later waves over 140 feet high will hit the north coast of Brazil and after about 5 hours the east coast of the United States will be hit with waves over 150 feet high destroying New York, Boston, Florida etc.



Many other parts of the world will be affected by this including the south coast of the UK. Once the wave travels up the English Channel, it will send a surge back into the Thames and flood the underground. (I have seen this already)

This landslide and mega tsunami will also sink any shipping along the Atlantic coastline. The wave is expected to travel about 20 miles inland flushing the contents of the drains and sewers into the sea. This pollution coupled with risen sea temperatures will cause a toxic bacteria bloom a “Red Tide” which will spread across the Atlantic and will kill most of the fish.



Revelation Chapter 8 Verse 8 says:

The second angel sounded his trumpet, and something like a huge mountain, all ablaze, was thrown into the sea. A third of the sea turned to blood, a third of the living creatures in the sea died, and a third of the ships were destroyed. (NIV)

In 1949 an earthquake caused the west face of Cumbre Vieja to crack and move towards the sea. Temperatures weren't sufficient to send it all the way in those days, but that is changing now. Today in 2021 there are constant earthquakes just south of Cumbre Vieja along the fault line on which it sits and now it has erupted.

Event 3 – A Third of The World's Water becomes Bitter. Rev. Ch. 8

In the soil occur natural metals which are toxic to all life. These toxic metals are: Aluminium, Arsenic, Beryllium, Cadmium, Copper, Lead, Mercury and Nickel.

Under normal circumstances, they are quite harmless as they are bound into the geological structure of the earth; however, they are released in the presence of acid and then find their way into our natural drinking water resources.

Acid rain is already causing this effect to some degree and many countries that rely on ground water are now finding them tainted with Arsenic, however, in the very near future, given the amount of Nitrogen Oxide, Sulphur Dioxide and the massive amounts of Carbon Dioxide particularly from the burning vegetation as a result of the burning hail, acid rain will be strong enough to release these toxic metals in a big way.

Natural water resources will become contaminated with toxic metals and the acidic water will taste bitter. Drinking the water will cause; Headaches, Nausea, Vomiting, Hallucinations, Kidney Failure, Liver Failure, Coma and Death.



Arsenic poisoning causes sores as seen in the above picture.

Toxic metals can also cause deformities in wildlife that lay their eggs in the soil. **This is a key factor in Event 5**

Revelation Chapter 8 Verse 10 & 11 says:

The third angel sounded his trumpet, and a great star (Angel) blazing like a torch, fell from the sky on a third of the rivers and on the springs of water. The name of the star (Angel) is Wormwood. A third of the waters turned bitter, and many people died from the waters that had become bitter. (NIV)

Wormwood is a plant which is widely grown throughout the Middle East. It has a very bitter taste and Ingesting even small quantities can cause Headaches, Nausea, Vomiting, Hallucinations, Kidney Failure, Liver Failure, Coma and Death.

Event 4 – Yellowstone Erupts and America is in Darkness Rev. Ch. 8

In various places around the world are what are known as super volcanoes.

One super volcano that is attracting a lot of nervous attention at the moment is in Yellowstone National Park.

A number of changes are happening to the local terrain for example; Norris Basin nearby has been raised up 35 inches since 1923.

One end of Yellowstone Lake is now 100 feet higher than the other end, causing flooding. Trees in the park are dying as their roots cook in the heat. Scientists tell us that a Yellowstone eruption is overdue.

Yellowstone will erupt and drop a one metre thick carpet of ash across the USA. One of the main gasses given off by Yellowstone is Sulphur Dioxide. In the presence of water vapour, Sulphur Dioxide very quickly becomes Sulphur Trioxide and then Sulphuric Acid.

Clouds of Sulphuric Acid reflect light and America will be plunged into darkness. A similar effect can be seen on the planet Venus which has an atmosphere of Clouds of Sulphuric Acid. Light is reflected back from Venus making it visible to the naked eye and the planet's surface is in almost total darkness.



Revelation Chapter 8 Verse 12 says:

The fourth angel sounded his trumpet, and a third of the sun was struck, a third of the moon and a third of the stars, so that a third of them turned dark. A third of the day was without light, and also a third of the night. (NIV)

The eruption of Yellowstone will also see massive amounts of Hydrogen Sulphide gas thrown up into the atmosphere. **This gas is a key factor in Event 6 The Burning Sulphur.**

Event 5 - Plagues of Mutated Locusts Attack Humans Rev. Ch. 9

Locusts have always been a problem but never to the degree that they are today. As temperatures have increased, locusts have moved with the climate and are now causing havoc as far north in Europe as France.

When faced with a shortage of crops to eat, Locusts have been known to eat the carcasses of other Locusts and failing that, they have been known to eat the clothes of people's backs. There is a very real danger that Locusts in the future will be hatched mutated or deformed.

The Locusts in Revelation Chapter 9 for 2,000 years have defied explanation until now. John was very familiar with Locusts and recognised these as such, but they were like nothing he had ever seen before.

The Short Explanation of The Locusts:

The adult Locust lays its' eggs in the soil, and a soil contaminated with toxic metals as described in **Event 3** will result in genetic mutations and

deformities. These deformed and mutated Locusts faced with the destruction of their environment and no food will attack humans.



Revelation Chapter 9 Verse 1 - 5 says:

The fifth angel sounded his trumpet, and I saw a star (Angel) that had fallen from the sky to earth. The star (angel) was given the key to the shaft of the abyss. When he opened the abyss, smoke rose from it like the smoke of a giant furnace. The sun and sky were darkened by the smoke from the abyss. And out of the smoke Locusts came down upon the earth and were given power like that of scorpions of the earth. They were told not to harm the grass of the earth or any plant or tree, but only those people who did not have the seal of God on their foreheads **(People who haven't asked Jesus into their life)**. They were not given power to kill them, but only to torture them for five months. And the agony they suffered was like that of the sting of a scorpion when it strikes a man. (NIV)

The lifespan of a Locust is 5 months.

The Full Scientific Explanation of The Locusts: (Please move to **Event 6 Burning Sulphur** if you don't want to read the scientific explanation)

To get an understanding of how this event takes place, we first need to investigate atavisms and taxonomy.

Firstly, atavisms are the appearance of features in an animal or human that look like those of an ancestor.

There are however many "so called" atavisms which are really nothing more than unusual features. Some of these have been labelled "vestigial" however, almost all such organs have been found to have an important use.

A classic example of this mislabelling, is the appearance of pelvic protrusions on whales containing unossified (cartilage that hasn't turned into bone) structures that resemble the femurs, tibia, fibulae and occasionally metatarsals of land dwelling mammals with legs. These protrusions are often

quite small and appear to be of no use to a whale which might possess them, however it is now known that they support the penis during coitus.

Occasionally, humans are born with tails containing vertebrae, muscles and nerves and which are covered with skin, hair and sweat glands. Such babies have even been known to have control over the tail in response to their emotional state, though they are usually removed for cosmetic reasons very early on, so it is not known if the control is voluntary.

This is almost certainly due to genetic errors during the development of the foetus.

The interesting thing is that human fetuses have for some time in the stages of their early development, have a small tail containing vertebrae.

Under normal conditions of development these vertebrae fuse together, curl underneath and thus form a support to the intestines.

True Atavisms

These are organs that are coded in the genetic DNA of an animal but are not expressed in the final animal born. An example is the loss of sight in fish in the Darl Caverns where there is no light. It is possible to breed them and produce a strain that is not blind as the genes have been allowed to be expressed.

There are two possible explanations for an atavism.

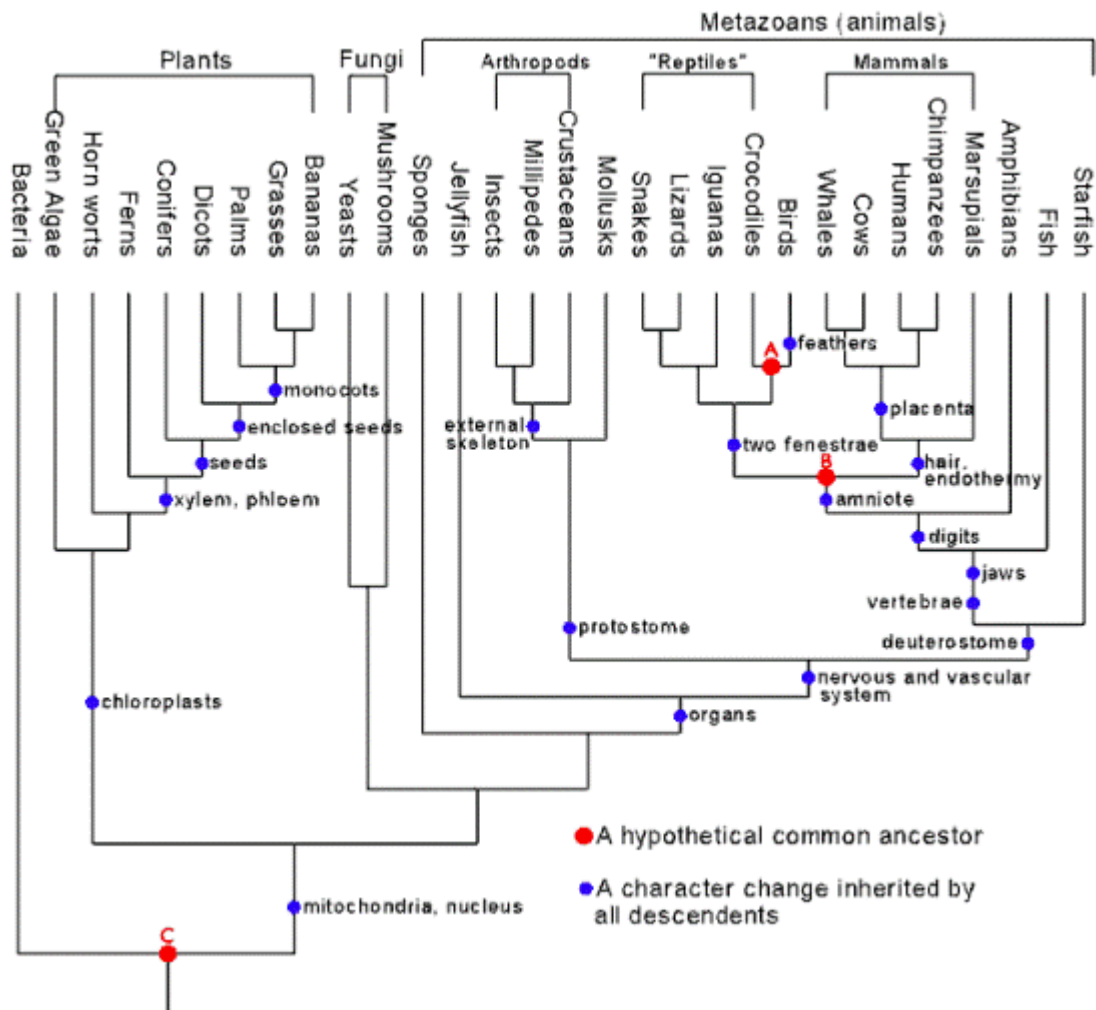
The first proposed by evolutionists is that an atavism is a throw-back inherited from a common ancestor. The problem with this hypothesis is that it doesn't fit with micro evolution which preaches gradual changes over a long period of time and also, as they are not universal, does not fit with the hypothetical common ancestors. The other problem with the evolution explanation is that evolution doesn't work backwards.

A much more plausible explanation was proposed by Louis Bolk (1866-1930) who concluded that mammals share common design templates and that atavisms were not a genetic throw back to an earlier generation. In these templates are traits which are suppressed in our development due to genetic or epigenetic factors that may involve the death of some cells (Apoptosis).

It is the existence of these common design templates which is the key to the strange appearance of the Locusts in the Revelation Chapter 9.

Having established that the probability is that God uses common design templates, we now need to establish whether the Locust shares a template with any other creatures. This is where Taxonomy comes in.

The Taxonomist classifies different forms of life based on its similarities. The evolutionist having put all life into groups or Taxa, then assumes a common ancestor for the development of that group.



In the diagram shown above, it is possible to see the hypothetical common ancestors marked by the red dots. It is also worth pointing out that the character changes inherited by all descendants marked by the blue dots are also hypothetical. The important part for the benefit of this article is the Arthropod group.

As mammals share common design templates at differing levels, then Arthropods will also. The Arthropod group includes Locusts, Crickets, Scorpions etc. which will share a common template.

The strange appearance of the Locusts described in the book of Revelation is actually an atavism where Genetic, Epigenetic or the Apoptosis processes have been interfered with and traits that would normally be suppressed in the template are allowed to develop.



The Locusts described are actually a combination of a Jerusalem Cricket which is famed for having a human like face and Locust with various other unsuppressed traits coming through.

There are also a number of Insects in the Arthropod group which have long silky hair and others that have teeth which fit the description given in the scripture so this creature already exists in design.

The cause of the atavism is toxic metals. Toxic metals are known to cause mutations and deformities.

The adult Locust lays its eggs in the soil, and a soil contaminated with toxic metals will result in an atavism as described.

Event 6 - Burning Sulphur Destroys A Third Of Mankind Rev. Ch. 9

South of the Dead Sea in Israel are the remains of 5 cities. We are told that 4000 years ago these 5 cities and the entire surrounding land were completely destroyed by burning Sulphur. After this terrible event, one of the cities was renamed Sodom meaning burnt, and another was renamed Gomorrah meaning heap. A scientific analysis of the area has confirmed the accounts of what happened.

More than this, the book of Revelation tells us it is going to happen again, but this time, on a much larger scale.



Revelation Chapter 9 Verse 13 - 18 says:

The sixth angel sounded his trumpet, and I heard a voice coming from the horns of the golden altar that is before God. It said to the sixth angel who had the trumpet, Release the four angels who are bound at the great river Euphrates. And the four angels who had been kept ready for this very hour and month and day and year were released to kill a third of mankind. The number of troops was 200 million. I heard their number. The horses and riders I saw in my vision looked like this: Their breastplates were fiery red, dark blue and yellow as Sulphur. The heads of the horses resembled the heads of lions, and out of their mouths came fire smoke and Sulphur. A third of mankind was killed by the three plagues of fire, smoke and Sulphur that came out of their mouths. (NIV)

The army described is spiritual but the resulting plague is natural and the most devastating of all which kills a third of mankind. Naturally occurring Sulphur found in the ground is yellow but the Sulphur found at Sodom and Gomorrah was pure white, as if the product of a chemical reaction.

How will burning Sulphur rain out of the sky and where does it come from?

From the emitted gases and ash particles of the Yellowstone eruption.

The Sulphur dioxide gas quickly mixes with water vapour in the atmosphere and becomes Sulphur trioxide then Sulphuric acid as described in **Event 3**.

The Hydrogen sulphide gas breaks down in the presence of oxygen. The Sulphur element breaks away and crystalizes around particles of ash in the atmosphere. These crystals are pure white. (This effect can be seen around geyser blow holes like Old Faithful in Yellowstone Park)

As the Sulphur crystals in the atmosphere become larger, gravity takes over and they fall back to earth. As they fall through the clouds of Sulphuric acid, heat is generated and they ignite.

The sad reality is that the Burning Sulphur will fall on America and immediately after this event and coupled with the mega tsunami and the Yellowstone eruption, America will be rubble and ashes. Jesus isn't anti American and loves all people. Americans are just in the wrong place at the wrong time.

The Sulphur crystalised around particles of ash and falling burning from the sky will clear pollutants from the atmosphere. For this reason at this point the Moon will no longer appear blood red. However, burning Sulphur gives off Sulphur Dioxide gas and as previously described this mixes with water vapour in the atmosphere and becomes clouds of Sulphuric acid.

Unlike the cloud of gas generated by Yellowstone from a single point like a mushroom, these clouds will be spread over a wide area and as stated earlier, clouds of Sulphuric acid reflect light, so light from the sun and moon travelling to Earth through gaps in the clouds will be trapped. This will give the appearance of the sun and moon being many times brighter than is normal.

Isaiah Chapter 30 Verse 26 fulfilled.

"The moon will shine like the sun, and the sunlight will be seven times brighter, like the light of seven full days, when the Lord binds up the bruises of His people and heals the wounds He inflicted." (NIV)



Event 7 – Massive Earthquake levels 1/10th Jerusalem. Rev. Ch. 11

Over the centuries there have been many earthquakes in the Middle East.

Earthquakes are confined to the earth's crust. Most occur within 40 miles of the surface though a few extend ten times deeper. Stress accumulates gradually as the continental plates move and mountains shift and this is relieved periodically through gradual creep or sudden jolts.

Israel lies immediately adjacent to the African Rift Zone, the deepest known break in the earth's crust. Along this zone are a number of active volcanoes including Mt. Kenya and Mt. Kilimanjaro. The rift travels right up through Israel to the Jordan Valley and the Dead Sea is a product of the rift's activity.

Previous known earthquakes have produced a total displacement of the Arabian and African Plates of the order of only 3 to 4 meters. Based on plate movements observed elsewhere around the world, 2000 years of history should have produced a displacement of about 14 meters. The large amount of unrelieved stress (-10 meters) along the African Rift Zone today also implies a major earthquake is long overdue in the in Israel.

The Dome on the Rock will be a casualty of this Earthquake.



Revelation Chapter 11 V 12 - 13 says:

Then they heard a loud voice from heaven saying to them, "**Come up here.**" And they went up to heaven in a cloud, while their enemies looked on. At that very hour there was a severe earthquake and a tenth of the city collapsed. Seven thousand people were killed in the earthquake, and the survivors were terrified and gave glory to the God of heaven. (NIV)

All who have asked God's forgiveness and asked Jesus into their live are saved from what comes next.

This is how the world will look at that time.

America will no longer exist as a country and neither will the dollar exist as a currency.

Anything hosted in America e.g. social networking sites will no longer exist.

Food will be scarce in all remaining countries and very expensive.

Africa will be almost uninhabitable.

Australia will be similar to Africa but will become a country of lawlessness.

China devastated by coastal flooding will have its' industries wiped out and the people will become a nation of wandering nomads in the higher grounds.

Russia will be devastated by floods and fires.

In the UK London will be flooded and the south coast devastated.

The countries that remain will be Europe, Russia and the Muslim countries to the east.

All the major businesses will be gone due to a lack of manufacturing and supplies.

All the big chain stores will be gone for lack of supplies.

Globalisation will have become Localisation.

Good arable land will become a premium.

The car, oil and gas industries along with the transport infrastructure will have collapsed.

Currencies will have collapsed during these first events but European financial experts will manage to refloat the Euro using land as the asset.

The man responsible for refloating The Euro will also become the new leader of The European State and will credit rate countries and individuals. To restore calm he will also claim to be Jesus returned.

He will rebuild the Dome on the Rock but devote it to himself which will infuriate the Muslim countries to the east.

Rationing and Martial Law will be in force in all European countries.



Event 8 – Fruit and Vegetable Famine, Scurvy breaks out. Rev. Ch. 16.

Due to the events that have already taken place, we have seen a massive build up of Sulphuric acid and Carbon dioxide in the atmosphere. This in turn has increased the strength of acid rain and lowered the pH value of the soil, it has also released further toxic metals to the point where the soil can no longer support the growing of crops particularly fruit and vegetables.

A famine of fruit and vegetables means that people will develop Scurvy.

Scurvy is a skin condition which used to plague the Egyptians but most commonly sailors used to suffer with Scurvy caused by a deficiency of vitamin C due to a lack of fresh fruit and vegetables during long voyages. The sufferer breaks out in ugly and painful sores.

Below is a picture of a person with Scurvy on their feet and legs. It also attacks many other parts of the body.



Revelation Chapter 16 V 1 - 2 says:

The first angel went and poured out his bowl on the land, and ugly and painful sores broke out on the people who had the mark of the beast and worshipped his image. (NIV)

During the Irish Potato Famine in the 1800-s about 50,000 people died of Scurvy.

To prevent Scurvy, British sailors used to carry lime juice hence the term "Limeys" and German sailors used to carry Sauerkraut, hence the term "Krauts"

Event 9 – The World’s Oceans Turn To Blood. Rev. Ch. 16.

This is a continuation of the Red Tide caused by Cumbre Vieja in **Event 2**. This phenomenon is called a “Red Tide” but has nothing to do with tides.

In the sea bed and rivers live algae called Dinoflagellates which under certain conditions can float to the surface. Some of these algae produce harmful toxins but worse still; there is a bacteria which finds its way into the flesh of other marine life and then produce toxins that eat away at the creature from the inside. This single cell creature is called Pfiesteria and is affectionately known as the “cell from hell”. Waters infected with Pfiesteria take on a reddish brown appearance like blood.

The conditions required to cause a bloom are: Increased pollution and an increase in temperature and or light.



Revelation Chapter 16 V 3 says:

The second angel poured out his bowl on the sea, and it turned into blood like that of a dead man, and every living thing in the sea died. (NIV)

A book about Pfiesteria has recently been released. It is called...
“And the Waters Turned to Blood.”

This event will be triggered by previous events: Carbon Dioxide causing excessive temperatures, sea temperatures rising as a result, and excessive light trapped by clouds of Sulphuric Acid created by Yellowstone and the burning Sulphur of Event 6, and the spread of the Red Tide in the Atlantic caused by the tsunami of Cumbre Vieja.

Event 10 – The World’s Rivers Turn To Blood. Rev. Ch. 16.

In **Event 3** we saw how the springs and rivers became acidic and were contaminated with toxic metals.

Event 10 is a progression of **Event 3**. Living in the river beds are bacteria similar to those that live in the sea and cause “Red Tides” They are called Extremophile Aerobic Bacteria because they thrive in acidic conditions.

These bacteria have also been found in caves in southern Mexico. They live in an inhospitable environment where toxic Hydrogen sulphide gas spews out of the ground and neat Sulphuric acid drips from the roof.

In a very short time because of the high levels of acid in natural water resources, not only will these bacteria become prevalent in the world’s springs and rivers but also they will oxidize iron deposits turning them into rust. These bacteria give the appearance of blood just like the red tides in the oceans.



Revelation Chapter 16 V 4 says:

The third angel poured out his bowl on the rivers and springs of water, and they became blood. (NIV)

Event 11 – The Scorching Sun Burns People’s Flesh. Rev. Ch. 16.

It’s not difficult to see how we are going to get to a position where the sun will scorch people’s flesh.

Firstly apart from our own Carbon Dioxide emissions over the last 100 years, you then have billions of tons of Methane going up into the atmosphere, Methane being about 21 times better at trapping heat. Although most of this is burnt off you still have massive amounts of Carbon Dioxide going into the atmosphere as a result of all the burning vegetation caused by the burning hail in **Event 1**.

There is also the Carbon Dioxide that is given off as a result of all the fires of **Event 6**.



Revelation Chapter 16 V 8 says:

The fourth angel poured out his bowl on the sun, and the sun was given power to scorch people with fire. They were seared by the intense heat and they cursed the name of God, who had control over these plagues, but they refused to repent and glorify him. (NIV)

Event 12 – Super Volcano Plunges The World Into Darkness. Rev. Ch. 16

In the Pacific ring of fire in the not too distant past, the super volcano Toba erupted which has recently become active again.

The deep Java trench marks the line where the Indo-Australian plate subducts, i.e. slips under, the section of the Eurasian plate on which Indonesia sits. The Indo-Australian plate heats up and its water content turns to superheated steam under enormous pressure. Prodigious energies are generated and the volcanoes on the fault line release a part of these energies.

According to computer models, somewhere near Toba, along the fault line there may be another super volcano getting ready for eruption. The Indo-Australian tectonic plate has slid 3.1 miles under the Eurasian tectonic plate and has created enough magma for a super volcano.

The recent series of volcanoes in that area have increased the level of alarm. If Toba erupts, it will bring the human race to its knees. It will plunge the world into darkness and be so devastating that temperatures could drop by 30 degrees Fahrenheit. It could actually be larger than the one Toba experienced previously.



Revelation Chapter 16 V 10 says:

The fifth angel poured out his bowl on the throne of the beast, and his kingdom was plunged into darkness. Men gnawed their tongues in agony and cursed the God of heaven because of their pains and sores, but they refused to repent of what they had done. (NIV)

Since originally writing this message in 2006, Toba has sprung to life in 2016.

Event 13 – The Euphrates Dries Up Signalling Armageddon. Rev. Ch. 16

A United Nations survey recently revealed that at least half of the world's rivers are either drying up at an alarming rate or are seriously polluted.

The Nile and Pakistan's Indus are greatly reduced by the time they reach the sea. Some, such as the Colorado and China's Yangtze, now rarely reach the ocean at all. Others, such as the Jordan and the Rio Grande on the US-Mexico border, are dry for much of their length. Even the Amazon has been hit by serious drought and salmon are dying in Alaska's Yukon River because its waters are getting too hot.

At the point at which we arrive at this event, the Euphrates like the world's other rivers won't be able to support life.

Revelation Chapter 16 V 12 & 16 says:

The sixth angel poured out his bowl on the great river Euphrates, and its water dried up to prepare the way for the kings of the East. Then they gathered the kings together to the place that in Hebrew is called Armageddon. (NIV)

Pictured the Valley of Megiddo in Israel



Red Sky News is not a political organisation, but this scripture does need some explanation.

The kings of the east refer to Iran, Syria, Iraq, Jordan, Afghanistan, Pakistan, India, Bangladesh, Malaysia and Indonesia.

They gather at Har Megiddo intent on invading Israel because they believe that the end of the world has come and also believe that: "The resurrection of the dead will not arrive until you fight the Jews and kill them."

Again, this message was originally written 2006 before anyone had ever heard of ISIS.

The United States will no longer exist because of the previous catastrophic events will not be in a position to either protect or help Israel in any way.

Why does the Euphrates need to dry up to allow an invasion of Israel?

The volcanic ash emitted by the previous event will make it impossible to fly aircraft or use guided weapons of any kind. The only possible mode of attack is by land and probably on horse back.

Event 14 – Super Earthquake Levels The Planet. Rev. Ch. 16

The magnitude of an earthquake is related to the length of the fault on which it occurs — the longer the fault, the larger the earthquake. To generate a super earthquake of 10.5 magnitude would require a fault 1000 miles long. The largest earthquake ever recorded was a magnitude 9.5 on May 22, 1960 in Chile on a fault that is almost 1,000 miles long. The African Rift Zone on which Israel sits is about 3,500 miles long.

The magnitude scale is open-ended, and scientists can't rule out a "Mega Quake" because they've only been measuring earthquakes for 100 years.



Revelation Chapter 16 V 17, 18, 20 & 21 says:

The seventh angel poured out his bowl into the air, and out of the temple came a loud voice from the throne, saying, "It is done!" Then there came flashes of lightning, rumblings, peals of thunder and a severe earthquake. No earthquake like it has ever occurred since man has been on the earth, so tremendous was the quake.

Every island fled away and the mountains could not be found. From the sky huge hailstones of about a hundred pounds each fell upon men and they cursed God on account of the plague of hail, because the plague was so terrible. (NIV)

The largest recorded hailstone to date weighs in at 2.7 pounds. The size of a hailstone is governed by the power of the storm that creates it. The more powerful the storm, the longer the hailstone stays up gathering ice, until the forces of the storm can no longer keep it aloft.

This Is “The Way”

When will all this happen and how do we know? It starts about 12 years after 2011- 2012 and runs for about seven years. Three and a half years for the first 7 events and three and a half years for the last 7 events.

The flood was the first ever recorded global climate event caused by mankind and appears in many cultures around the world. The fire is the second ever recorded global climate event although prophetically recorded.

Why is God doing this? We have done it to ourselves. We have been a consumer driven society. We have loved money and manufactured idols such as cars and many other inanimate objects which we love more than God. In following this path we have become a Godless society and the manufacture of these idols has changed the environment we live in just like it did in the days of The Great Flood.

Who said all these things in the book of Revelation? Jesus did, once He had ascended into heaven, so Jesus is alive today in heaven and doesn't want anyone to perish.

John Chapter 3 Verse 16 For God so loved the world that he gave his one and only Son, that whoever believes in him shall not perish but have eternal life. (NIV)

So what must I do to be saved from what's coming? Jesus said you must be born again (John 3: 3). This simply means a change of heart, asking God to forgive you and asking Jesus into your life.

To do this, say the following prayer.

“Dear Farther God. I ask that you forgive me. I believe in Jesus your Son and Lord Jesus, I ask to come into my life and fill me with your Holy Spirit. Thank you Jesus. Amen”

This prayer isn't a magic spell so don't worry if you don't get it word perfect. It's your change of heart and faith in Jesus that is what is really important. So now tell someone else about Jesus so they can receive what you have.

The New Ark.

With this message came a calling and a scripture to fulfil about Jesus and His imminent return and this is it.

"Although the Lord gives you the bread of adversity and the water of affliction, your teachers will be hidden no more; with your own eyes you will see them. Whether you turn to the right or to the left, your ears will hear a voice behind you, saying, "This is the way; walk in it." Isaiah 30: 20 (NIV)

This is a calling to create a global network of street teachers teaching **"The Way" of Jesus Christ,**

The "bread of adversity and water of affliction" are the first six events described in this document.

Jesus doesn't want Bible teachers, He wants teachers who abide in His Words because only His Words bring life. He is **THE WAY**.

His message is really simple, He has revealed what these events are, why and when, so ask Him to take away your sin and believe in Him.

Red Sky News Ltd has been formed to facilitate this, it's free to join and members have a legal right to teach THE WAY on an international level.

The verses that follow are these: Isaiah 30; 21-26

Then you will defile your idols overlaid with silver and your images covered with gold; you will throw them away like a menstrual cloth and say to them, "Away with you!"

He will also send you rain for the seed you sow in the ground, and the food that comes from the land will be rich and plentiful. In that day your cattle will graze in broad meadows.

The oxen and donkeys that work the soil will eat fodder and mash, spread out with fork and shovel.

In the day of great slaughter, when the towers fall, streams of water will flow on every high mountain and every lofty hill.

The moon will shine like the sun, and the sunlight will be seven times brighter, like the light of seven full days, when the LORD binds up the bruises of his people and heals the wounds he inflicted." (NIV)

Jesus only ever endorsed Old Testament scripture that was about Him.

This really is about Him, His love for us and His imminent return to save all those who have believed.